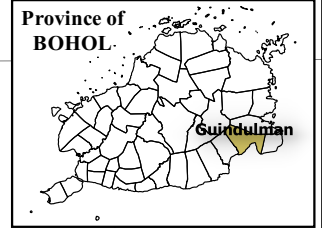


124°23'0" 124°25'0" 124°27'0" 124°29'0" 124°31'0"



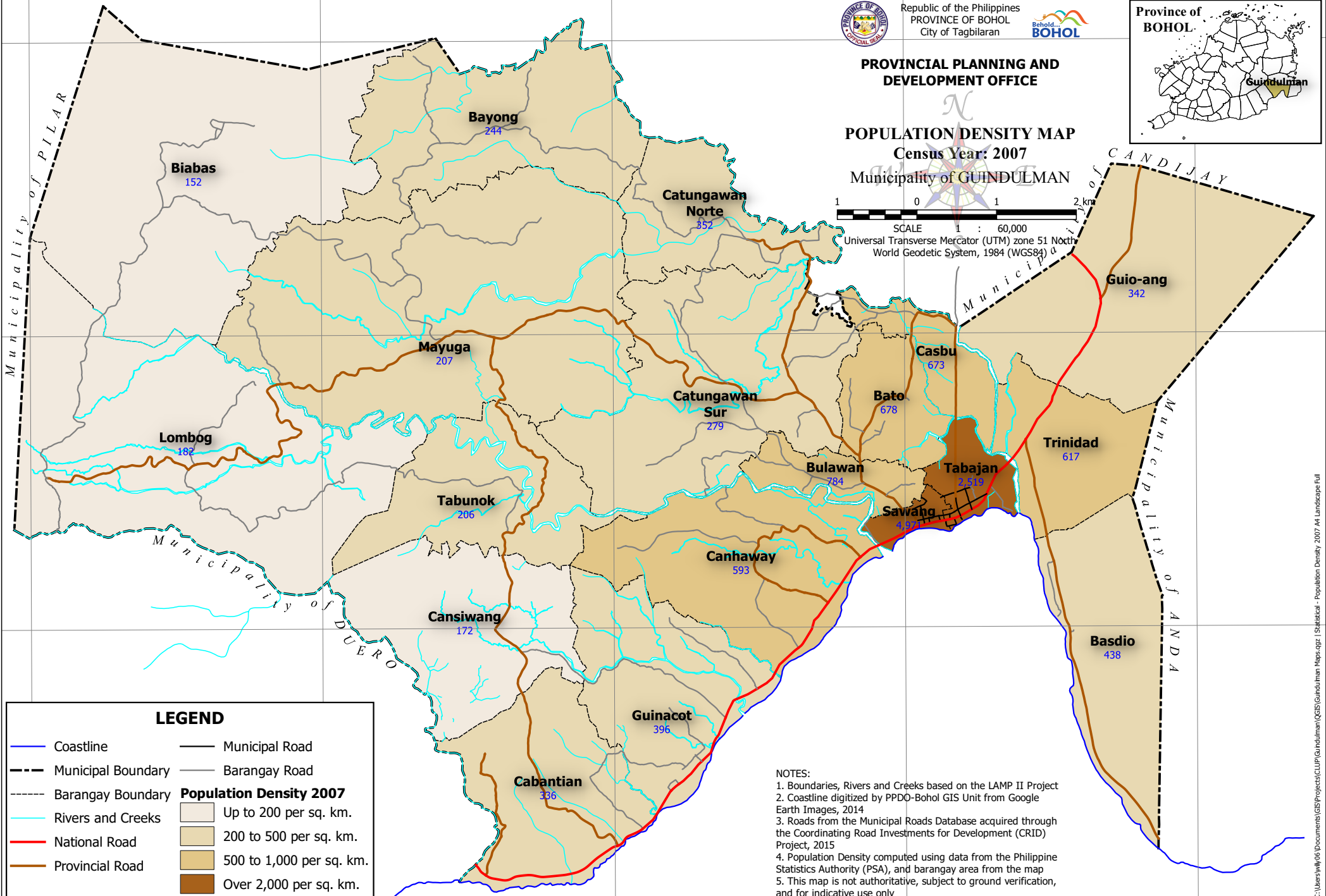
Republic of the Philippines
PROVINCE OF BOHOL
City of Tagbilaran



**PROVINCIAL PLANNING AND
DEVELOPMENT OFFICE**

**POPULATION DENSITY MAP
Census Year: 2007
Municipality of GUINDULMAN**

1 0 1 2 km
SCALE 1 : 60,000
Universal Transverse Mercator (UTM) zone 51 North
World Geodetic System, 1984 (WGS84)



LEGEND

	Coastline		Municipal Road
	Municipal Boundary		Barangay Road
	Barangay Boundary	Population Density 2007	
	Rivers and Creeks		Up to 200 per sq. km.
	National Road		200 to 500 per sq. km.
	Provincial Road		500 to 1,000 per sq. km.
			Over 2,000 per sq. km.

NOTES:
 1. Boundaries, Rivers and Creeks based on the LAMP II Project
 2. Coastline digitized by PPD0-Bohol GIS Unit from Google Earth Images, 2014
 3. Roads from the Municipal Roads Database acquired through the Coordinating Road Investments for Development (CRID) Project, 2015
 4. Population Density computed using data from the Philippine Statistics Authority (PSA), and barangay area from the map
 5. This map is not authoritative, subject to ground verification, and for indicative use only

124°23'0" 124°25'0" 124°27'0" 124°29'0" 124°31'0"